

Geertrui Mieke De Ketelaere

MENS VERSUS MACHINE

Artificiële intelligentie
ontrafeld

PELCKMANS

Geertrui Mieke De Ketelaere

HOMME VERSUS MACHINE

L'intelligence artificielle
démystifiée

PELCKMANS

Geertrui Mieke De Ketelaere

WANTED: HUMAN-AI TRANSLATORS

Artificial Intelligence
Demystified

PELCKMANS

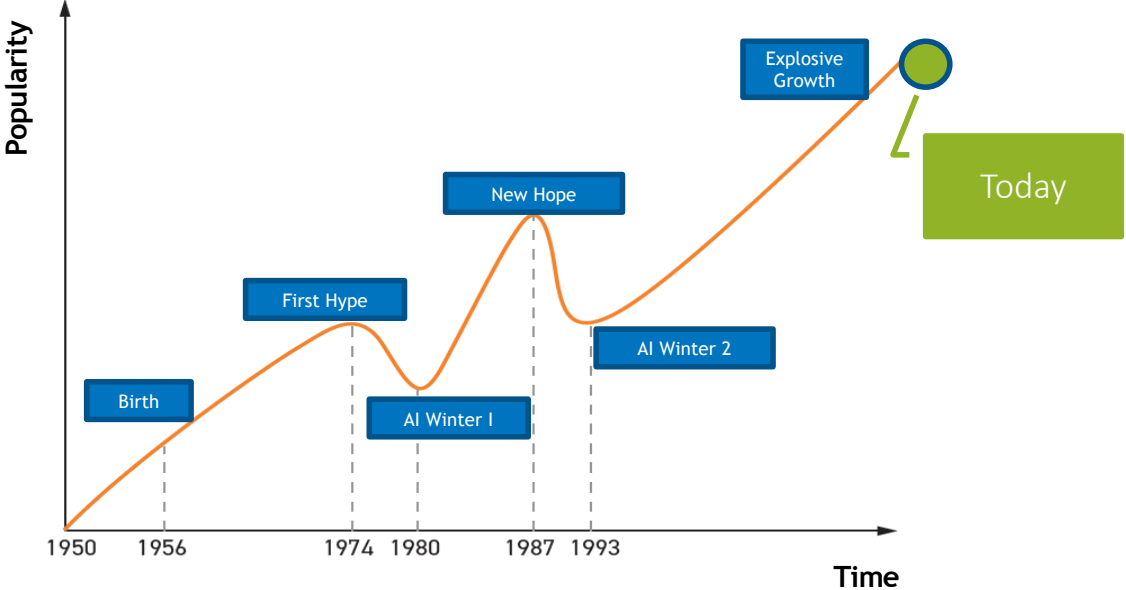
Geertrui Mieke De Ketelaere

MENSCH ODER MASCHINE

Künstliche Intelligenz
entwirrt

PELCKMANS

WELCOME IN AI-LAND



AI TODAY



Difficult Tasks



Dirty Tasks



Dull Tasks



Dangerous Tasks

AI TODAY

Telegraph.co.uk

Uber stops developing driverless cars as it pivots to ride-sharing technology

Uber has dropped plans to build its own driverless car and instead focus on a division developing the technology to a US start-up, after a 1 day ago

POLICY \ BUSINESS \ TECH

IBM will no longer use facial recognition

IBM's CEO says we should reevaluate our use of facial recognition

By Jay Peters | @jaypeters Jun 8, 2020 8:49am EDT

BI Business Insider

Google tried to use AI to

ousted AI ethic

Google held a meeting with Timnit Gebru, a prominent AI ethicist, 19 hours ago

Tesla loses top AI executive who led Autopilot vision team

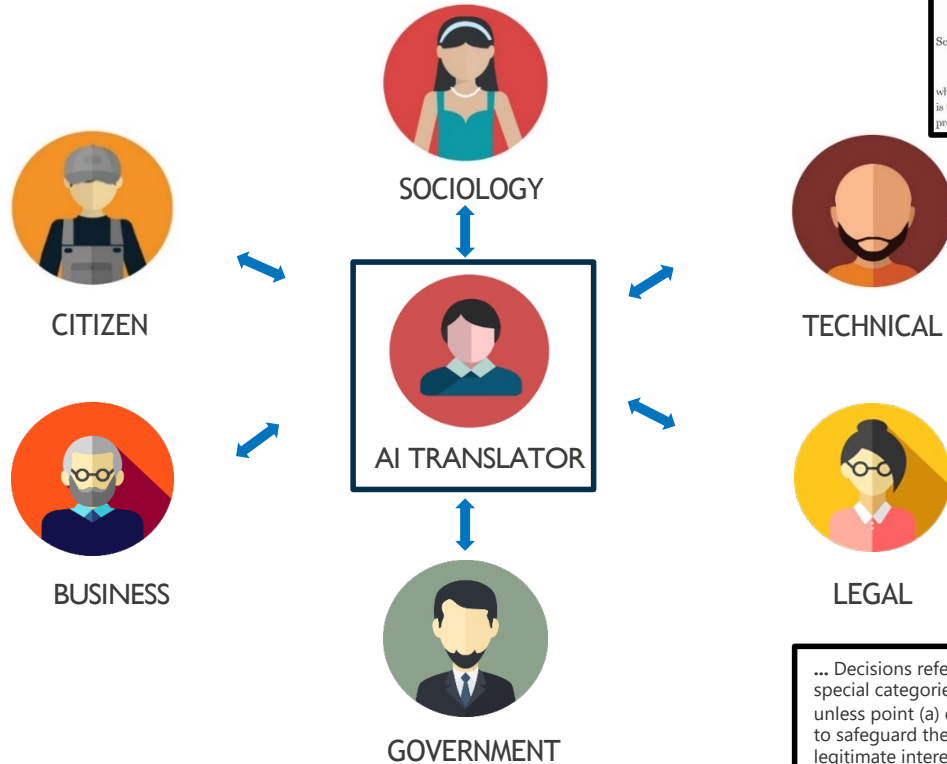
Kirsten Korosec @kirstenkorosec / 12:48 AM GMT+2 • July 14, 2022

Comment



Image Credits: Christopher Goodney/Bloomberg / Getty Images

WANTED: HUMAN AI TRANSLATORS

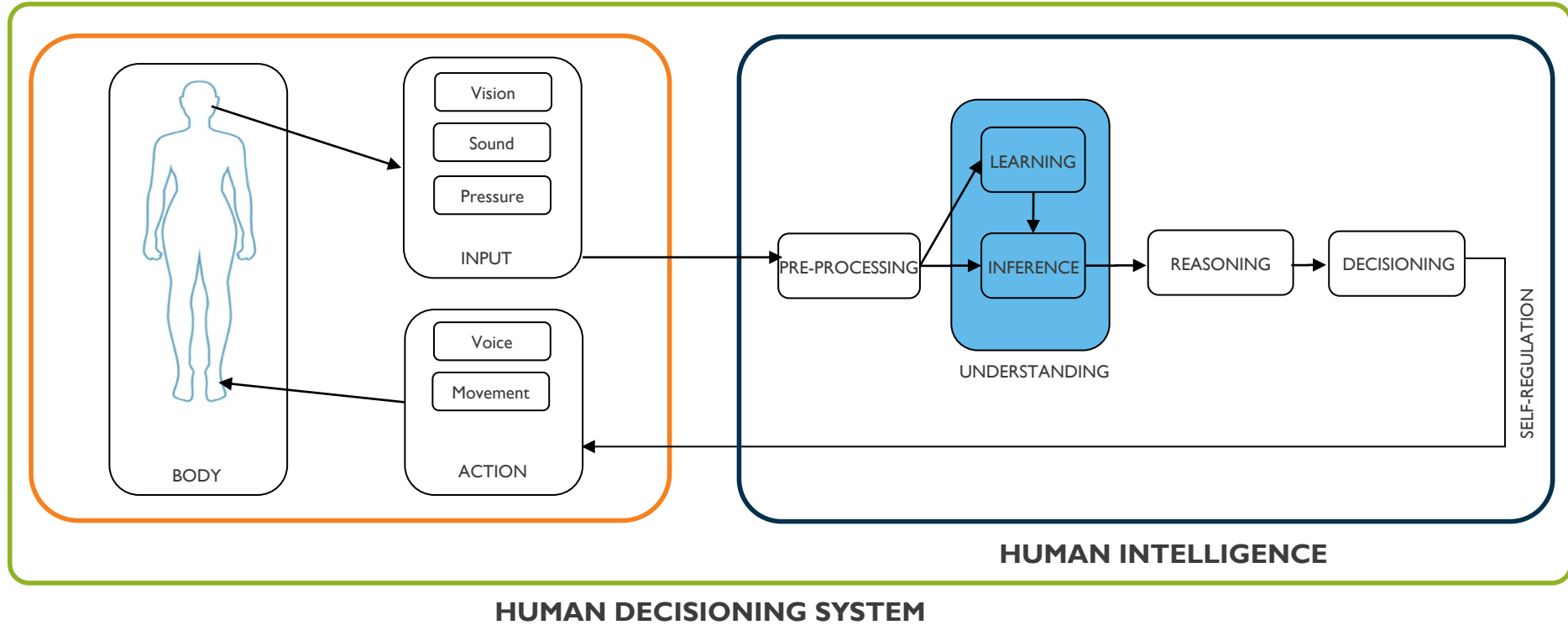


$$\text{Score}(U_i, v) = \left(r_{ui} + \frac{\sum_{U_j \in \mathcal{N}(U_i)} \text{Sim}(U_i, U_j) (r_{U_j v} - \bar{r}_{uj})}{\sum_{U_j \in \mathcal{N}(U_i)} \text{Sim}(U_i, U_j)} \right) f \quad (6)$$

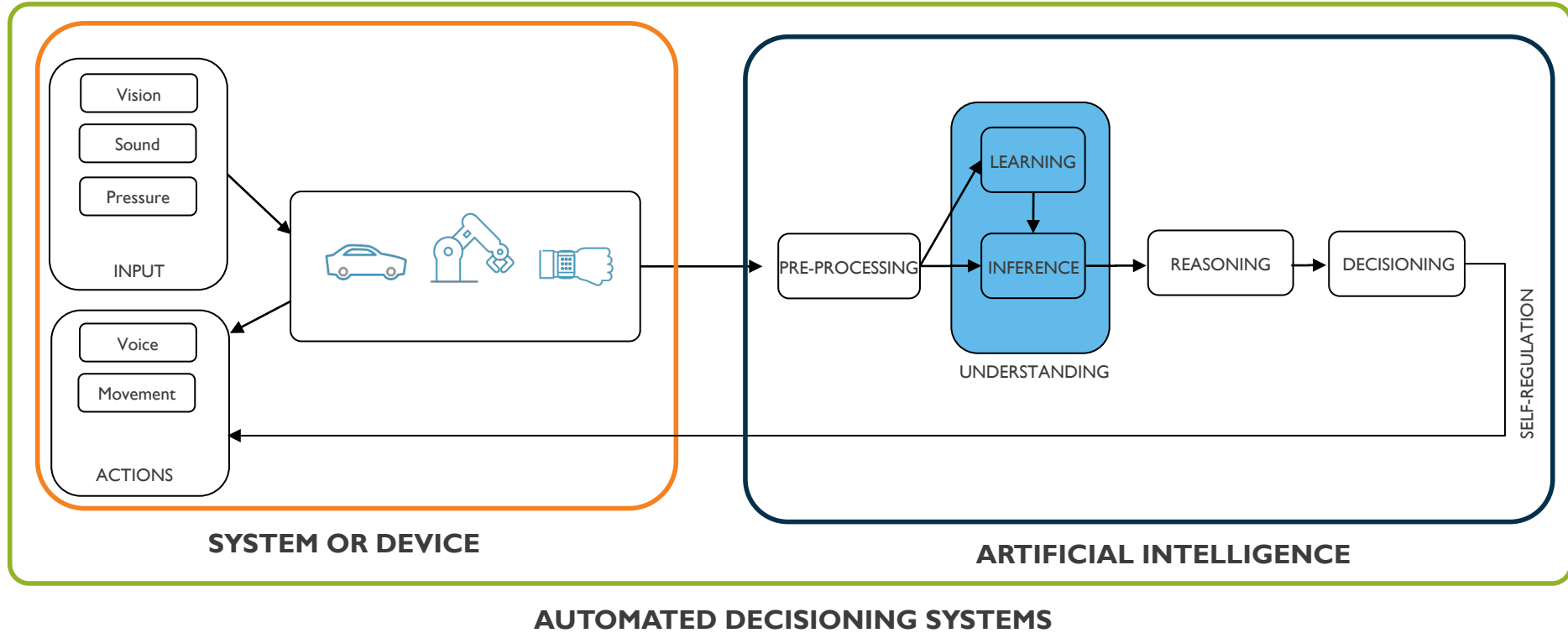
where $f = \exp\{-1 + \alpha(\bar{r}_{ui} - \bar{r}_{uj})\}$, \exp represents the exponential function based on e , \bar{r}_{ui} is the average of U_j , $r_{U_j v}$ is score of U_j to v , α is the attenuation factor, and $\text{Score}(U_i, v)$ is the prediction score of U_i to v .

... Decisions referred to in paragraph 2 shall not be based on special categories of personal data referred to in Article 9(1), unless point (a) or (g) of Article 9(2) applies and suitable measures to safeguard the data subject's rights and freedoms and legitimate interests are in place ...

HUMAN INTELLIGENCE TODAY



ARTIFICIAL INTELLIGENCE TODAY



AI ANNO 2022

	HUMAN INTELLIGENCE	ARTIFICIAL INTELLIGENCE
1. Speed of processing		X
2. Knowledge Transfer		X
3. Decision Accuracy		X
4. Operational Modus		X
5. Size of storage	X	
6. Energy Usage	X	
7. Parallel Processing	X	
8. Reasoning	X	

AI ANNO 2022

	HUMAN INTELLIGENCE	ARTIFICIAL INTELLIGENCE
9. Adapt to Change	X	
10. Type of Input Data	X	
11. Physical Collaboration	X	
12. Human Dialogues	X	
13. Creativity	X	
14. Emotions	X	
15. Consciousness	X	
16. Ethics (Bias)	X	X
17. Ethics (Noise)	X	X

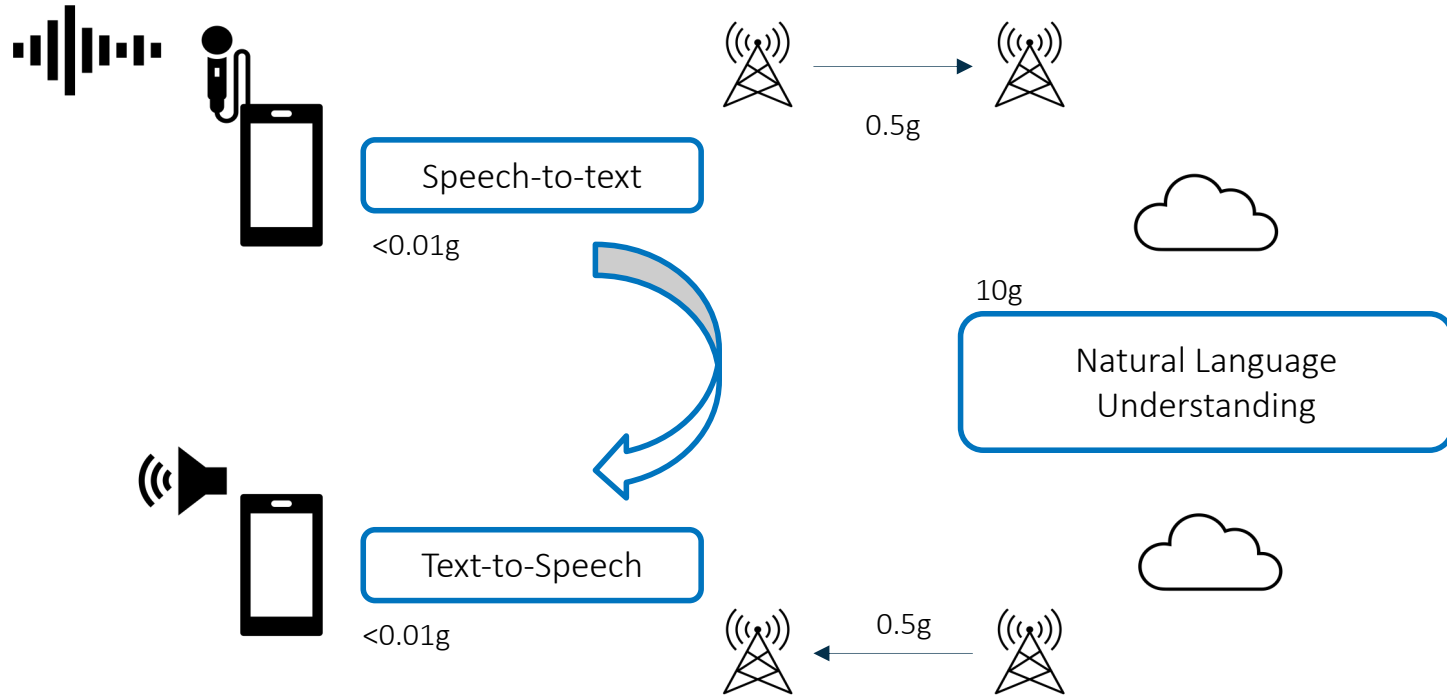
A LITTLE CHECK

« Siri, what is the weather going to be like tomorrow »

THE RESULT

11g CO₂

HOW IS THIS CALCULATED?



LACKING COMMON SENSE

SCIENCE / TECH / ARTIFICIAL INTELLIGENCE

OpenAI's state-of-the-art machine vision AI is fooled by handwritten notes



Granny Smith	85.6%
iPod	0.4%
library	0.0%
pizza	0.0%
toaster	0.0%
dough	0.1%



Granny Smith	0.1%
iPod	99.7%
library	0.0%
pizza	0.0%
toaster	0.0%
dough	0.0%

/ A fascinating case study in machine versus human intelligence

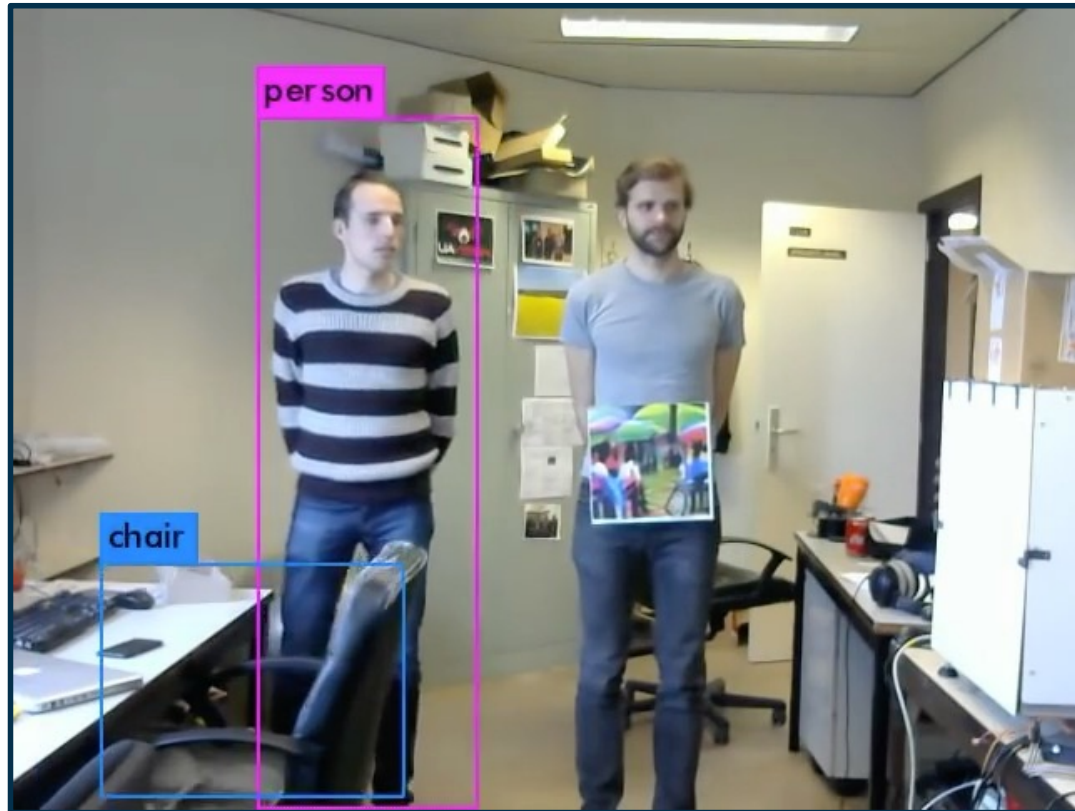
By **JAMES VINCENT**

Mar 8, 2021, 2:49 PM GMT+1 | [0 Comments](#)



Need to trick OpenAI's latest vision system? Simply add a handwritten label to your target. Image: OpenAI

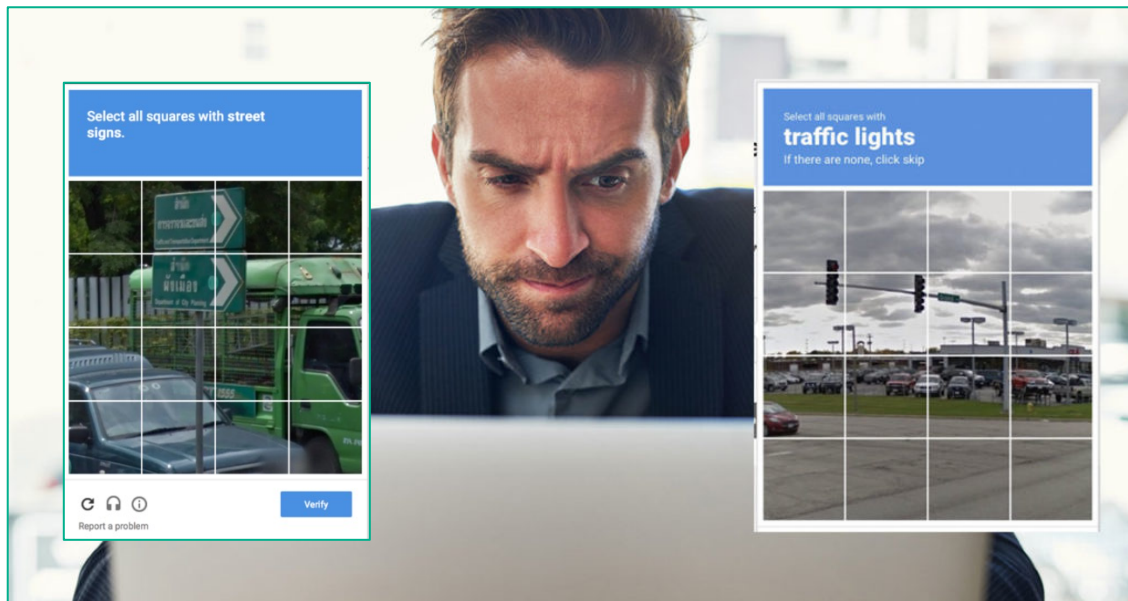
LACKING COMMON SENSE



LACKING CONCEPTS & ABSTRACTION



LACKING CONCEPTS & ABSTRACTION



LACKING INTRA DEVICE COLLABORATION

Video of Tesla on Autopilot crashing into truck kicks off online debate

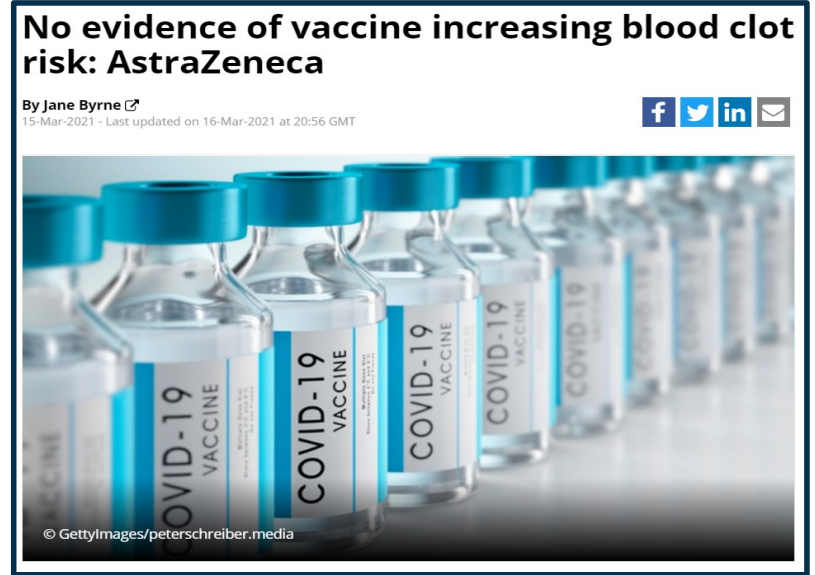
Users noted that Autopilot might not be capable of spotting stationary objects

Web Desk | June 06, 2020 17:45 IST



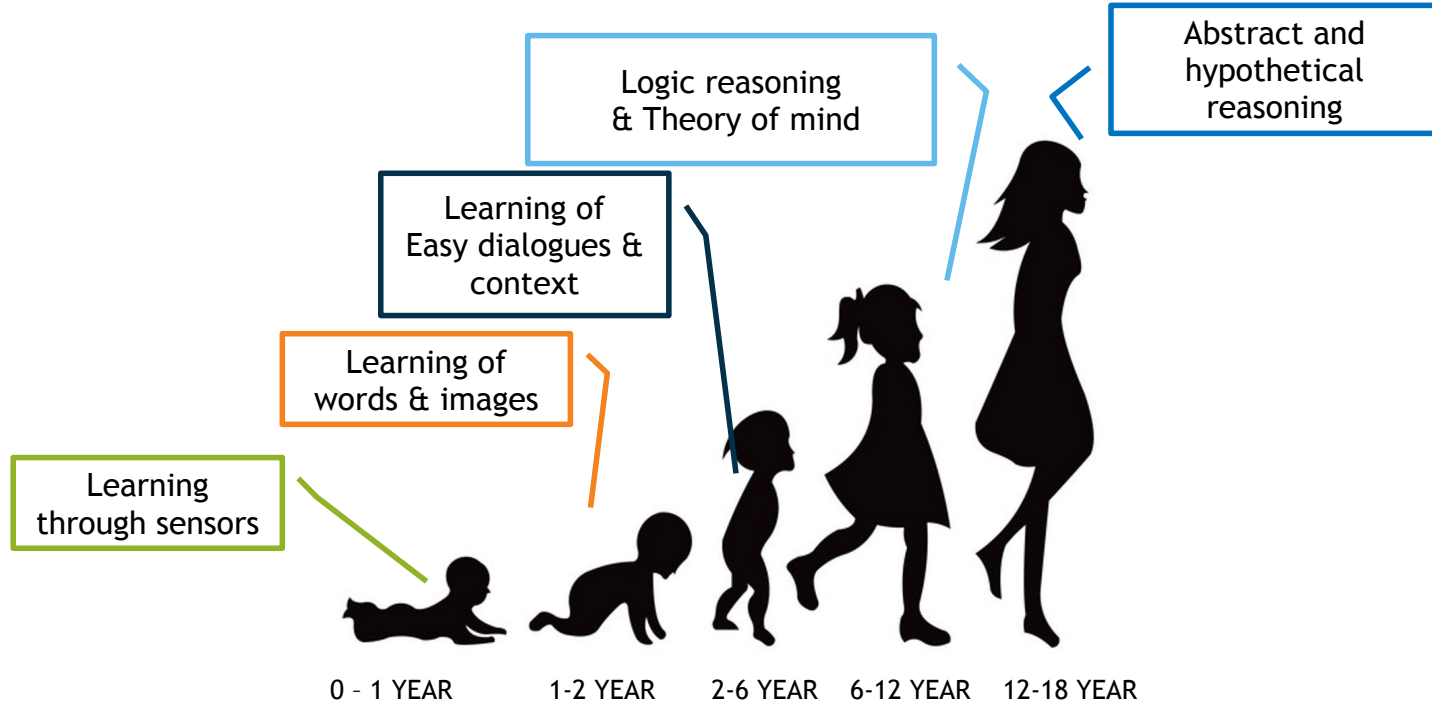
A screengrab from the video of Tesla Model 3 (white) crashing into the overturn truck

LACKING CAUSALITY, FOCUS ON FINDING CORRELATIONS

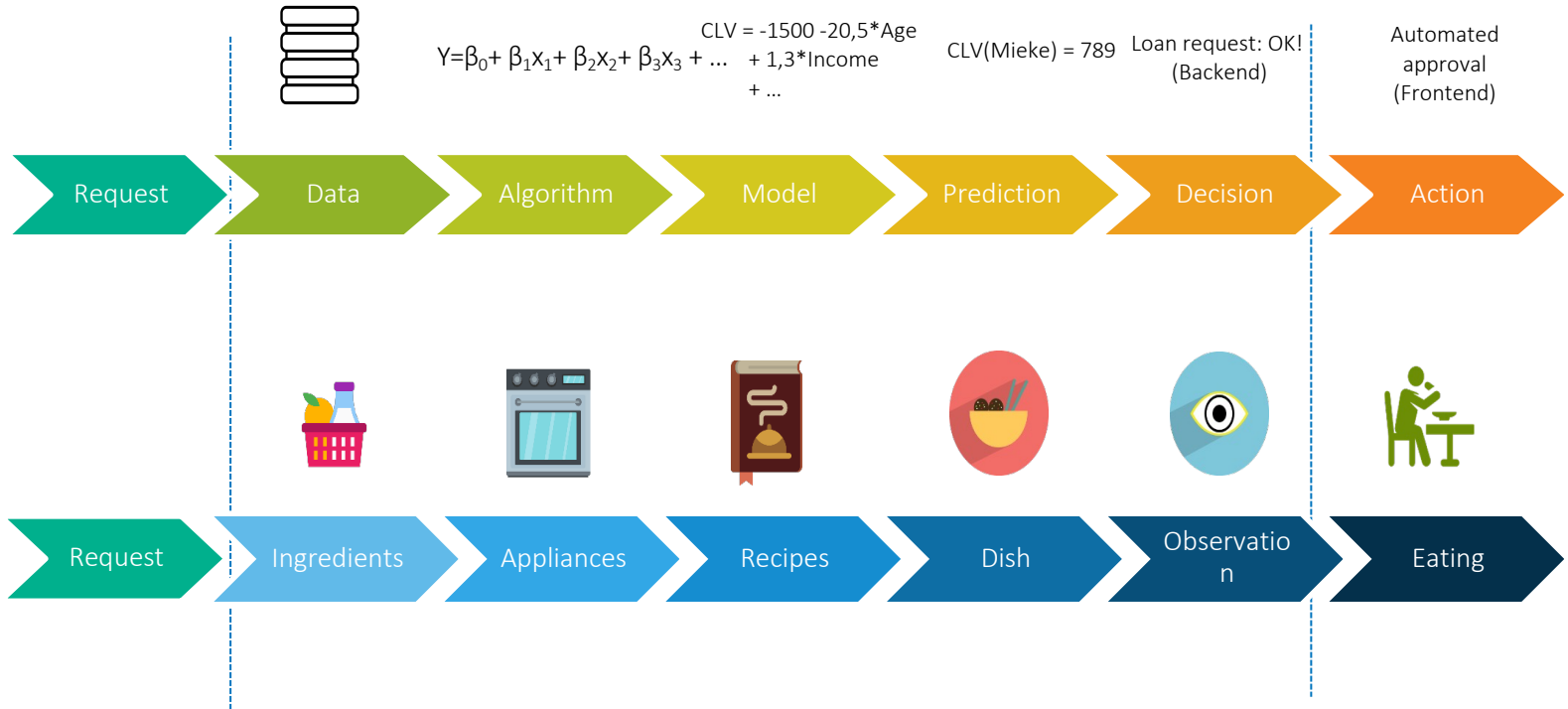


If AI's So Smart, Why Can't It Grasp Cause and Effect? | WIRED

HUMAN INTELLIGENCE



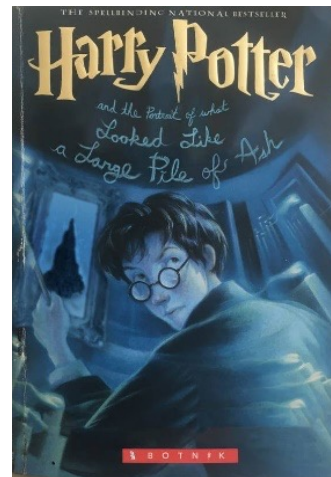
THE PROCESS



AUTOGENERATION ROLLERCOASTER



AUTOGENERATED ART



AUTOGENERATED BOOKS

THE POWER OF AUTOGENERATION: FUN ...



<http://makemeazombie.com>

THE POWER OF AUTOGENERATION: ... OR DANGER

Deepfakes: An insurance industry threat

From bogus claims to reputational damage, the ability of synthetic media to seemingly bend reality is an emerging menace with a far reach.

By **Nicos Vekiarides** | September 14, 2021 at 12:00 AM



Deep Learning Malware Can Fake Cancer on Medical Images

A deep learning algorithm successfully penetrated a healthcare organization and fooled both humans and an AI system with faked medical images.



Source: Thinkstock

EDITORS' PICK | Oct 14, 2021, 07:01am EDT

Fraudsters Cloned Company Director's Voice In \$35 Million Bank Heist, Police Find



Thomas Brewster Forbes Staff

Cybersecurity

Associate editor at Forbes, covering cybercrime, privacy, security and surveillance.



EY Insights Services Industries Careers About us Search

How cybercriminals are using malicious bots to disrupt e-commerce

E-commerce bots are a threat to online security, so businesses should adopt key identity and access management principles.

In brief

- There is no single way of stopping malicious bots.
- The four bot archetypes are always evolving.
- Companies can protect themselves and their customers against bots and reinforce their brand reputation.

By **Alan Hussain**
@alanhussain - united.kingdom
Cybersecurity Consulting Partner

4 minute read
27 May 2021

ARTIFICIAL INTELLIGENCE ACT: INCREASE OF TRUST



Brussels, 21.4.2021
COM(2021) 206 final

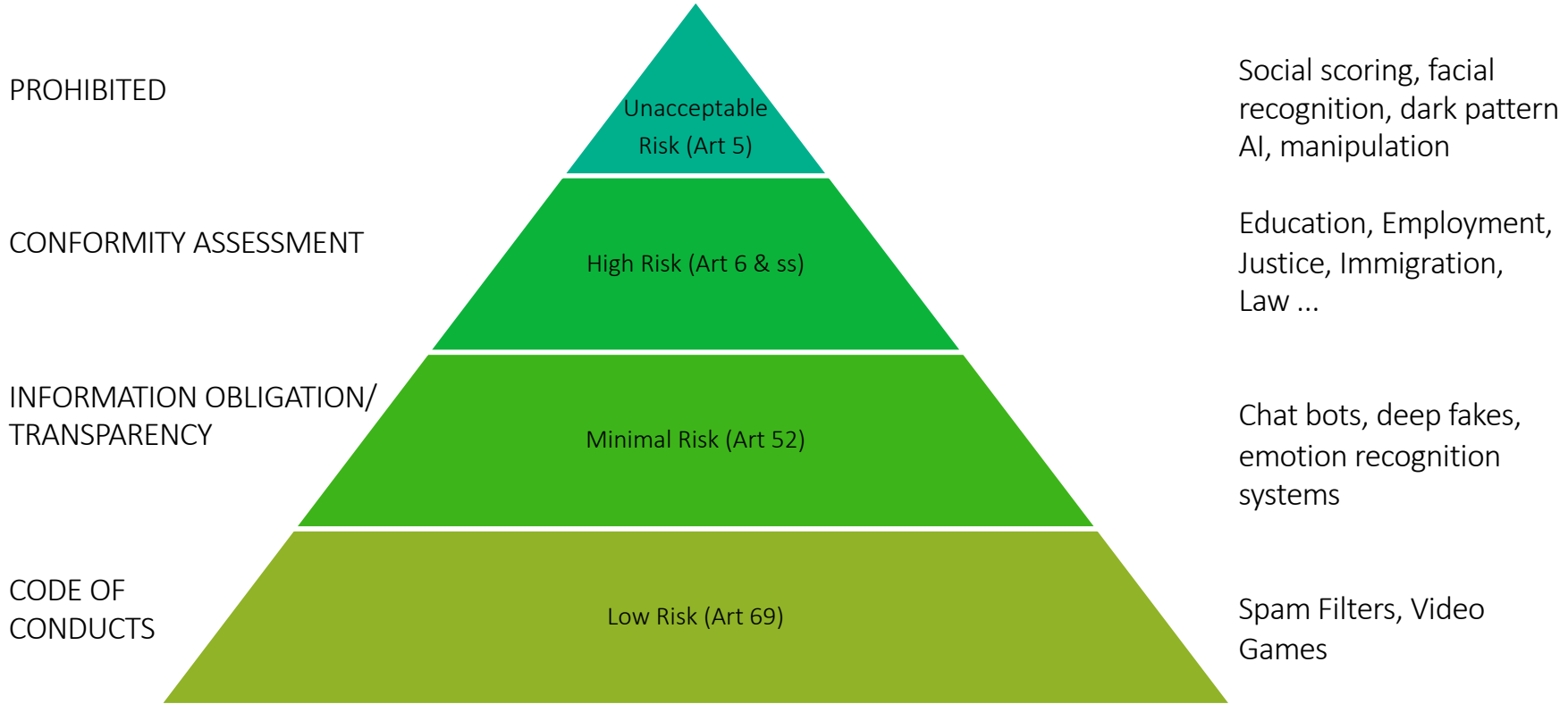
2021/0106 (COD)

Proposal for a

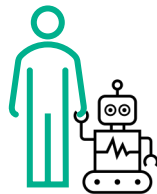
REGULATION OF THE EUROPEAN PARLIAMENT AND OF THE COUNCIL

**LAYING DOWN HARMONISED RULES ON ARTIFICIAL INTELLIGENCE
(ARTIFICIAL INTELLIGENCE ACT) AND AMENDING CERTAIN UNION
LEGISLATIVE ACTS**

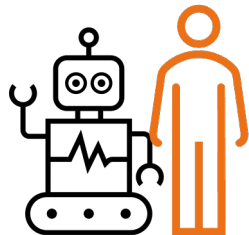
THE AI REGULATION RISK BASED APPROACH



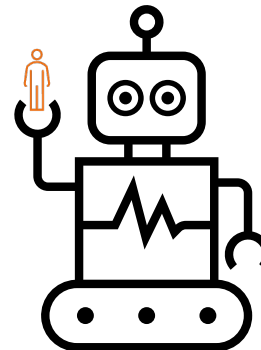
WANTED: HUMAN-AI TRANSLATORS



NARROW AI

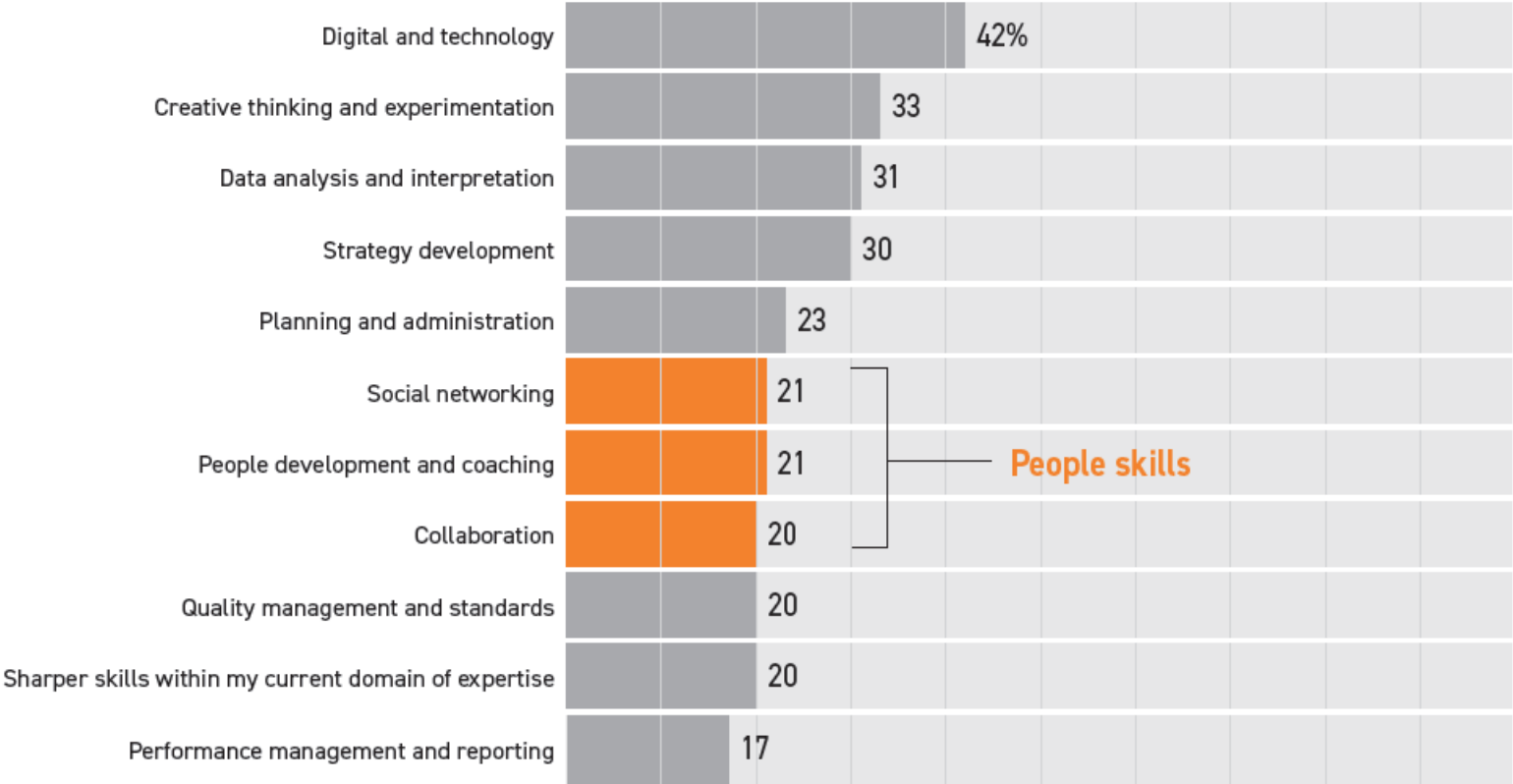


BROAD AI



GENERAL AI

FUTURE AI SKILLS



Geertrui Mieke De Ketelaere

MENS VERSUS MACHINE

Artificiële intelligentie
ontrafeld

PELCKMANS

Geertrui Mieke De Ketelaere

HOMME VERSUS MACHINE

L'intelligence artificielle
démystifiée

PELCKMANS

Geertrui Mieke De Ketelaere

WANTED: HUMAN-AI TRANSLATORS

Artificial Intelligence
Demystified

PELCKMANS

Geertrui Mieke De Ketelaere

MENSCH ODER MASCHINE

Künstliche Intelligenz
entwirrt

PELCKMANS